



地址：江苏省常州市溧阳中关村开发区上上路118号  
 Add: No.118,shangshang Road,Liyang,Changzhou city,China  
 Whatsapp/Wechat/Mobile: +86-519-87100388 +86-188 5121 7288  
 E-mail: salcf@jwell.cn

版本号Edition No.: 2025.05

# PIPE EXTRUSION



**常州金纬管道设备制造有限公司**  
 CHANGZHOU JWELL PIPE EQUIPMENT CO.,LTD.



**A Global Supplier of Solutions on Extrusion Technology**  
**金纬机械—全球挤出技术解决方案供应商**

10+ 驻海外办事处 Overseas offices  
 580+ 技术研发&工程师 R&D Engineer  
 3,000+ 金纬机械员工人数 Jwell Employee  
 8+ 个制造基地 Manufacture Bases  
 500+ 项独家专利技术 Patents  
 1,000,000m<sup>2</sup>+ 工厂面积 Plant Area



**80年代初**

**金海螺第一代螺杆研制成功**  
 In the early 1980s, the first generation screw of JINHAILUO was successfully developed

**1997**

**上海金纬机械**  
 Shanghai JWELL Machinery

**2008**

**苏州金纬机械**  
 Suzhou JWELL Machinery

**2012**

**常州金纬机械**  
 Changzhou JWELL Machinery

**2018**

**贝克威尔 (泰国)**  
 Bkwell (Thailand)

**2019**

**浙江金纬智能装备**  
 Zhejiang JWELL Machinery

**2020**

**金纬公司业绩突破50亿人民币**  
 Jwell's annual sales exceeded CNY 5 billion

**2021**

**滁州金纬机械**  
 Chuzhou JWELL Machinery

**2025**

**连续15年荣获中国塑料机械挤出行业排名首位**  
 Ranked first in China's plastic machinery extrusion industry for 15 consecutive years



常州金纬管道设备制造有限公司是上海金纬公司的又一重要发展战略中心，其坐落于江苏省溧阳市江苏中关村科技产业园内，是一家致力于塑料管材挤出成型设备的研发、制造的高科技厂家。厂区占地面积400余亩，公司拥有一支高素质的研发队伍和经验丰富的机械、电气调试工程师团队，以及先进的机械加工基地和规范的装配车间。公司本着“用心持久、拼搏创新”的企业精神，不断探求挤出新领域的开拓。热烈欢迎国内外新老客户莅临我司参观、指导、合作、我们愿为您提供强有力的支持。



公司产品已遍布全国各地，并出口到德国、意大利、西班牙、日本、印度、韩国、印尼、中东、非洲和南美洲等100多个国家和地区，深受客户好评。

**“品质卓越 完美如一”**

是金纬公司的质量方针，是全体员工努力的方向。

**“诚实待人”**

是我们铸就“百年金纬”的核心理念。

董事长：何海潮

Email: he@jwell.cn

Changzhou JWELL Pipe Equipment Co.,Ltd. is another development strategy center of Shanghai JWELL Machinery Co.,Ltd, locating at Jiangsu zhongguancun technology industrial park, Liyang city, Jiangsu province, a high-tech manufacturer specializing in research and development of plastic pipe extrusion equipment. The factory area is of 400 acres; We have a high qualified R&D and experienced mechanical and electrical engineer team as well as advanced processing foundation and normative assembly shop. Our enterprise spirit is "Attentive, Enduring, Quick and Orderly", keeping on exploring of new extrusion field. Mostly welcome to new and old customers to visit us for investigation, guidance and cooperation. We are happy to offer powerful support!

Our customers are all over China, and we have customers in Germany, Italy, Spain, Japan, India, Korea, Indonesia, Middle East, South America and other countries and areas. Our machines are well accepted by our customers.

"Excellent Quality, Perfect All" is Jwell's quality policy, and all staff's working direction.

"Be honest" is the core idea for us to contribute "Century JWELL"

President: He Haichao

Mobile: +86 13601628188



## 大口径HDPE供水管、燃气管挤出生产线 Large Diameter HDPE Water Supply and Gas Supply Pipe Extrusion Line

### 性能特点:

金纬公司自行研制开发的HDPE/MDPE供水管及燃气管生产线其结构独特，自动化程度高，操作方便、连续生产稳定可靠。该生产线生产的管道具有适度的刚性、强度、又具有良好的柔性、耐蠕变性、耐环境应力开裂性和良好的热熔接性能，已成为城市燃气输送管道和室外给水管的首选产品。增加主机，更换部分单元可用于生产两机两层，两机三层或三机三层等多功能聚乙烯管材。

### Performance and advantage:

The HDPE/MDPE water supply and gas supply pipe extrusion line developed by JWELL company is featured of unique structure, high automation, easy operation and reliable continuous manufacture performance. Pipe produced by our machine has the moderate rigidity & strength, good flexibility, creep resistant, environmental stress crack resistance and favorable hot melting property. As a result, this pipe is considered as the first choice for water and gas transportation system in cities. Add more extruders and replace some units for the production of multi-functional polyethylene pipes, such as two-layer pipes with two extruders, three-layer pipes with two machines or three machines.



### 主要技术参数 Main technical parameter

生产线型号 Type	管材规格 Diameter(mm)	配套挤出机 Extruder	最大挤出力 Output(kg/h)	总装机功率 Power(kw)
JWGPE-800	Ø400~Ø800	JWS90/38	800~1100	630
JWGPE-1000	Ø500~Ø1000	JWS120/38	900~1200	700
JWGPE-1200	Ø630~Ø1200	JWS90/38x2	900~1500	890
JWGPE-1600	Ø1000~Ø1600	JWS120/38x2	1000~1700	1100
JWGPE-2500	Ø1400~Ø2500	JWS120/38x2或150/38x2	1500~2000	1350
JWGPE-3000	Ø2000~Ø3000	JWS150/38x2	2000~2500	1550

备注：以上规格参数如有变更，恕不另行通知。Note:The specifications are subject to change without prior notice.

### PE100 级聚乙烯管材公称压力和规格尺寸

PE100 给水用聚乙烯 (PE) 管材国家标准 (GB/T 13663.2-2018)

"公称外径 dn"	公称壁厚 en/mm								
	标准尺寸比								
	SDR9	SDR11	SDR13.6	SDR17	SDR21	SDR26	SDR33	SDR41	
	管系列								
	S4	S5	S6.3	S8	S10	S12.5	S16	S20	
	"PE80 级公称压力 MPa"								
	1.6	1.25	1.0	0.8	0.6	0.5	0.4	0.32	
"公称外径 dn"	公称壁厚 en/mm								
	标准尺寸比								
	SDR9	SDR11	SDR13.6	SDR17	SDR21	SDR26	SDR33	SDR41	
	管系列								
	S4	S5	S6.3	S8	S10	S12.5	S16	S20	
	"PE100 级公称压力 MPa"								
	2.0	1.6	1.25	1.0	0.8	0.6	0.5	0.4	
16	2.3	—	—	—	—	—	—	—	—
20	2.3	2.3	—	—	—	—	—	—	—
25	3.0	2.3	2.3	—	—	—	—	—	—
32	3.6	3.0	2.4	2.3	—	—	—	—	—
40	4.5	3.7	3.0	2.4	2.3	—	—	—	—
50	5.6	4.6	3.7	3.0	2.4	2.3	—	—	—
63	7.1	5.8	4.7	3.8	3.0	2.5	—	—	—
75	8.4	6.8	5.6	4.5	3.6	2.9	—	—	—
90	10.1	8.2	6.7	5.4	4.3	3.5	—	—	—
110	12.3	10.0	8.1	6.6	5.3	4.2	—	—	—
125	14.0	11.4	9.2	7.4	6.0	4.8	—	—	—
140	15.7	12.7	10.3	8.3	6.7	5.4	—	—	—
160	17.9	14.6	11.8	9.5	7.7	6.2	—	—	—
180	20.1	16.4	13.3	10.7	8.6	6.9	—	—	—
200	22.4	18.2	14.7	11.9	9.6	7.7	—	—	—
225	25.2	20.5	16.6	13.4	10.8	8.6	—	—	—
250	27.9	22.7	18.4	14.8	11.9	9.6	—	—	—
280	31.3	25.4	20.6	16.6	13.4	10.7	—	—	—
315	35.2	28.6	23.2	18.7	15.0	12.1	9.7	7.7	
355	39.7	32.2	26.1	21.1	16.9	13.6	10.9	8.7	
400	44.7	36.3	29.4	23.7	19.1	15.3	12.3	9.8	
450	50.3	40.9	33.1	26.7	21.5	17.2	13.8	11.0	
500	55.8	45.4	36.8	29.7	23.9	19.1	15.3	12.3	
560	62.5	50.8	41.2	33.2	26.7	21.4	17.2	13.7	
630	70.3	57.2	46.3	37.4	30.0	24.1	19.3	15.4	
710	79.3	64.5	52.2	42.1	33.9	27.2	21.8	17.4	
800	89.3	72.6	58.8	47.4	38.1	30.6	24.5	19.6	
900	—	81.7	66.2	53.3	42.9	34.4	27.6	22.0	
1000	—	90.2	72.5	59.3	47.7	38.2	30.6	24.5	
1200	—	—	88.2	67.9	57.2	45.9	36.7	29.4	
1400	—	—	102.9	82.4	66.7	53.5	42.9	34.3	
1600	—	—	117.6	94.1	76.2	61.2	49.0	39.2	
1800	—	—	—	105.9	85.7	69.1	54.5	43.8	
2000	—	—	—	117.6	95.2	76.9	60.6	48.8	
2250	—	—	—	—	107.2	86.0	70.0	55.0	
2500	—	—	—	—	119.1	95.6	77.7	61.2	

注：公称压力按照 C=1.25 计算。

### DIMENSIONS OF PIPES

Dimension specification for HDPE pipe refer to ISO 4427-2:2007

Material	SDR6		SDR7.4		SDR9		SDR11		SDR13.6		SDR17		SDR21		SDR26		SDR33		SDR41	
PE80	PN25		PN20		PN16		PN12.5		PN10		PN8		PN6		PN5		PN4		PN3.2	
PE100	-		PN25		PN20		PN16		PN12.5		PN10		PN8		PN6		PN5		PN4	
dn	e	ID	e	ID	e	ID	e	ID	e	ID	e	ID	e	ID	e	ID	e	ID	e	ID
mm	mm	mm	mm	mm	mm	mm	mm	mm	mm	mm	mm	mm	mm	mm	mm	mm	mm	mm	mm	mm
16	3.0	10.0	2.3	11.4	2.0	12.0	-	-	-	-	-	-	-	-	-	-	-	-	-	-
20	3.4	13.2	3.0	14.0	2.3	15.4	2.0	16.0	-	-	-	-	-	-	-	-	-	-	-	-
25	4.2	16.6	3.5	18.0	3.0	19.0	2.3	20.4	2.0	21.0	-	-	-	-	-	-	-	-	-	-
32	5.4	21.2	4.4	23.2	3.6	24.8	3.0	26.0	2.4	27.2	2.0	28.0	-	-	-	-	-	-	-	-
40	6.7	26.6	5.5	29.0	4.5	31.0	3.7	32.6	3.0	34.0	2.4	35.2	2.0	36.0	-	-	-	-	-	-
50	8.3	33.4	6.9	36.2	5.6	38.8	4.6	40.8	3.7	42.6	3.0	44.0	2.4	45.2	2.0	46.0	-	-	-	-
63	10.5	42.0	8.6	45.8	7.1	48.8	5.8	51.4	4.7	53.6	3.8	55.4	3.0	57.0	2.5	58.0	-	-	-	-
75	12.5	50.0	10.3	54.4	8.4	58.2	6.8	61.4	5.6	63.8	4.5	66.0	3.6	67.8	2.9	69.2	-	-	-	-
90	15.0	60.0	12.3	65.4	10.1	69.8	8.2	73.6	6.7	76.6	5.4	79.2	4.3	81.4	3.5	83.0	-	-	-	-
110	18.3	73.4	15.1	79.8	12.3	85.4	10.0	90.0	8.1	93.8	6.6	96.8	5.3	99.4	4.2	101.6	-	-	-	-
125	20.8	83.4	17.1	90.8	14.0	97.0	11.4	102.2	9.2	106.6	7.4	110.2	6.0	113.0	4.8	116.6	-	-	-	-
140	23.3	93.4	19.2	101.6	15.7	108.6	12.7	114.6	10.3	119.4	8.3	123.4	6.7	126.6	5.4	129.2	-	-	-	-
160	26.6	106.8	21.9	116.2	17.9	124.2	14.6	130.8	11.8	135.4	9.5	141.0	7.7	144.6	6.2	147.6	-	-	-	-
180	29.9	120.2	24.6	130.8	20.1	139.8	16.4	147.2	13.3	153.4	10.7	158.6	8.6	162.8	6.9	166.2	-	-	-	-
200	33.2	133.6	27.4	145.2	22.4	155.2	18.2	163.6	14.7	170.6	11.9	176.2	9.6	180.8	7.7	184.6	-	-	-	-
225	37.4	150.2	30.8	163.4	25.2	174.6	20.5	184.0	16.6	191.8	13.4	198.2	10.8	203.4	8.6	207.8	-	-	-	-
250	41.5	167.0	34.2	181.6	27.9	194.2	22.7	204.6	18.4	213.2	14.8	220.4	11.9	226.2	9.6	230.8	-	-	-	-
280	46.5	187.0	38.3	203.4	31.3	217.4	25.4	229.2	20.6	238.8	16.6	246.8	13.4	253.2	10.7	258.6	-	-	-	-
315	52.3	210.4	43.1	228.8	35.2	244.6	28.6	257.8	23.2	268.6	18.7	277.6	15.0	285.0	12.1	290.8	9.7	295.6	7.7	299.6
355	59.0	237.0	48.5	258.0	39.7	275.6	32.2	290.6	26.1	302.8	21.1	312.8	16.9	321.3	13.6	327.8	10.9	333.2	8.7	337.6
400	-	-	54.7	290.6	44.7	310.6	36.3	327.4	29.4	341.2	23.7	352.6	19.1	361.8	15.3	369.4	12.3	375.4	9.8	380.4
450	-	-	61.5	327.0	50.3	349.4	40.9	368.2	33.1	383.8	26.7	396.6	21.5	407.0	17.2	415.6	13.8	422.4	11.0	428.0
500	-	-	-	-	55.8	388.4	45.4	409.2	36.8	426.4	29.7	440.6	23.9	452.2	19.1	461.8	15.3	469.4	12.3	475.4
560	-	-	-	-	62.5	435.0	50.8	458.4	41.2	477.6	33.2	493.6	26.7	506.6	21.4	517.2	17.2	525.4	13.7	532.6
630	-	-	-	-	70.3	489.4	57.2	515.6	46.3	537.4	37.4	555.2	30.0	570.0	24.1	581.8	19.3	591.4	15.4	599.2
710	-	-	-	-	79.3	551.4	64.5	581.0	52.2	605.6	42.1	625.8	33.9	642.2	27.2	655.6	21.8	666.4	17.4	675.2
800	-	-	-	-	89.3	621.4	72.6	654.8	58.8	682.4	47.4	705.2	38.1	723.8	30.6	738.8	24.5	751.0	19.6	760.8
900	-	-	-	-	-	-	81.7	736.6	66.2	767.6	53.3	793.4	42.9	814.2	34.4	831.2	27.6	844.8	22.0	856.0
1000	-	-	-	-	-	-	-	-	72.5	855.0	59.3	881.4	47.7	904.6	38.2	923.6	30.6	938.8	24.5	951.0
1200	-	-	-	-	-	-	-	-	88.2	1023.6	67.9	1064.2	57.2	1085.6	45.9	1108.2	36.7	1126.6	29.4	1141.2
1400	-	-	-	-	-	-	-	-	102.9	1194.2	82.4	1235.2	66.7	1266.6	53.5	1293.0	42.9	1314.2	34.3	1331.4
1600	-	-	-	-	-	-	-	-	117.6	1364.8	94.1	1411.8	76.2	1447.6	61.2	1477.2	49.0	1502.0	39.2	1521.6
1800	-	-	-	-	-	-	-	-	-	105.9	1588.2	85.7	1628.6	69.1	1661.8	54.5	1691.0	43.8	1712.4	
2000	-	-	-	-	-	-	-	-	-	117.6	1764.8	95.2	1764.8	76.9	1846.2	60.6	1878.8	48.8	1902.4	

dn: Pipe Outside Diameter, mm  
e: Wall thickness, mm

## 单层、多层HDPE供排水管、燃气管、PP超静音管节能高速挤出生产线 Single-layer, Multi-layer HDPE Water Supply and Drainage Pipe, Gas Pipe, PP Ultra-silent Pipe Energy Saving and High Speed Extrusion Line

**性能特点:** 该生产线是我公司采用欧洲先进技术, 新研制开发的节能高速生产线, 适用于HDPE、PP等聚烯烃类管材的高速挤出。与普通生产线相比, 其节能效果达到35%左右, 其生产效率增加了1倍多, 不但可以节省了场地及人力成本, 还提高了效率。该生产线外形美观, 自动化程度高, 生产稳定可靠。增加主机, 更换部分单元可用于生产两机两层, 两机三层或三机三层等多功能聚乙烯管材。该生产线外形美观, 自动化程度高, 生产稳定可靠, 是替代进口品牌设备的最佳选择。

### Performance and advantage:

This production line adopts the most advanced technology of Europe, it is a new research achievement of energy-saving production line, which is suitable for high speed extrusion of HDPE, PP and other polyolefin pipe, compared with common production line, the energy-saving effect reach on 35%, and the product efficiency increase more than 1 times, thus it is not only saving the cost of site and manpower, but also improving efficiency. This production line has nice appearance, higher automatical degree, production reliable and stable. Add more extruders and replace some units for the production of multi-functional polyethylene pipes, such as two-layer pipes with two extruders, three-layer pipes with two machines or three machines. This production line has nice appearance, higher degree of automation, stable and reliable production and is the best choice to replace imported brand equipment.



### 主要技术参数 Main technical parameter

生产线型号 Type	生产管材规格 Pipe spec(mm)	挤出机 Extruder	最大挤出产量 Max Output(kg/h)	总装机功率 Total power
JWGPE-63	Ø20-63(双double)	JWG60/38	400	150
JWGPE-110	Ø20-110	JWG60/40	400	200
JWGPE-160	Ø50-160	JWG60/40	400	210
JWGPE-250	Ø50-250	JWG75/38	650	230
JWGPE-315	Ø110-315	JWG75/38	650	290
JWGPE-450	Ø200-450	JWG90/38	960	380
JWGPE-630	Ø315-630	JWG90/38	1000	490

备注: 以上规格参数如有变更, 恕不另行通知。Note:The specifications are subject to change without prior notice.



## MPP改性聚丙烯电缆护套管高速节能挤出生产线 MPP Modified Polypropylene Cable Sheath Pipe High-speed Energy-saving Extrusion Production Line

该生产线主要用于生产改性聚丙烯电缆导管，采用MPP专用螺杆，高扭矩减速机。挤出模具采用专用流道设计，真空冷却箱为变频控制。多履带牵引机采用伺服驱动。该生产线还配有高速自定心无屑切割机和高精度米重控制系统。整条生产线自动化程度高，节能高效。

This production line is mainly used to produce modified polypropylene cable conduit, using MPP special screw and high torque gearbox. The extrusion die adopts special runner design, and the vacuum cooling tank is controlled by frequency conversion. The multi-track haul off machine is driven by servo. The production line is also equipped with high-speed self-centering chip free cutting machine and high-precision meter weight control system. The whole production line is highly automated, energy-saving and efficient.



### 主要技术参数 Main technical parameter

生产线型号 Type	生产管材规格 Diameter (mm)	挤出机 Extruder	最大挤出量 Max. output (kg/h)	总装机功率 Power (KW)
JWGMPP-250	Ø50 ~ Ø250	JWG75/38	400 ~ 500	230
JWGMPP-315	Ø110 ~ Ø315	JWGX75/38	500 ~ 600	290

备注：以上规格参数如有变更，恕不另行通知。Note:The specifications are subject to change without prior notice.

## PVC实壁管生产线 PVC Solid Pipe Extrusion Line

金纬机械提供CPVC, UPVC, PVC-UH, PVC-M, PVC-O等不同材料配方的生产线, 并可根据管材的不同使用用途, 设计单层以及多层的管材生产设备。生产线采用了超耐磨合金螺杆机筒和镀铬高抛光模具, 使物料成型容易, 塑化均匀, 生产速度快, 运行稳定, 控制操作方便。

使用2台以上的双螺杆主机可共挤生产两层或三层PVC管。管材夹心层为高钙PVC或者PVC发泡原料。

Jwell Machinery provides production lines with different material formulations such as CPVC, UPVC, PVC-UH, PVC-M, PVC-O, and can design single-layer and multi-layer pipe production equipment according to different uses of pipes. The production line adopts super wear-resistant alloy screw barrel and chrome plated high polishing mould with fast production speed, which makes the material easy to form, plasticize uniformly, with stable operation and convenient control.

Two or three layer PVC pipes can be co-extruded by using 2 or more than 2 sets of twin screw extruders. The middle layer of the pipe is made of high calcium PVC or PVC foaming material.



### 主要技术参数 Main technical parameter

生产线型号 Type	生产管材规格 Pipe spec (mm)	挤出机 Extruder	最大挤出量 Max.output (kg/h)	总装机功率 Total power (kw)
JWG-PVC160	Ø63 ~ Ø160	SJZ65/132	250 ~ 300	100
JWG-PVC250	Ø75 ~ Ø250	SJZ65/132	250 ~ 300	110
JWG-PVC315	Ø110 ~ Ø315	SJZ80/156	300 ~ 400	180
JWG-PVC450	Ø200 ~ Ø450	SJZ80/173	450 ~ 500	245
JWG-PVC630	Ø315 ~ Ø630	SJZ92/188	650 ~ 750	350
JWG-PVC800	Ø400 ~ Ø800	SJP130/26	1000 ~ 1300	420
JWG-PVC1000	Ø500 ~ Ø1000	SJP135/31	1150 ~ 1300	460
JWG-PVC1200	Ø800 ~ Ø1200	SJP135/31	1150 ~ 1300	550

备注: 以上规格参数如有变更, 恕不另行通知。Note:The specifications are subject to change without prior notice.

## PVC一模双出、四出电工套管挤出生产线 PVC Pipe Two Stand and Four Stand Electric Protection Pipe Extrusion Line

### 性能特点:

该生产线采用特殊的螺杆与模具设计,使物料成型容易,塑化均匀,生产速度快,产能大,吨能耗低,运行稳定,控制操作方便。

### Main charaters:

This production line adopts special screw and mould design to make the material form easily with uniform plasticizing, high production speed, large capacity, low energy consumption, stable running and easy operation.



### 主要技术参数 Main technical parameter

生产线型号 Type	生产管材规格 Pipe spec (mm)	最大挤出量 Max.output (kg/h)	总装机功率 Total power (kw)
JWG-PVC32 (一出四Four stand)	Ø16 ~ Ø32	250 ~ 300	104
JWG-PVC63 (双管Two stand)	Ø20 ~ Ø63	250 ~ 300	105
JWG-PVC110 (双管Two stand)	Ø50 ~ Ø110	400 ~ 500	145

备注: 以上规格参数如有变更,恕不另行通知。Note:The specifications are subject to change without prior notice.

## PVC-O管道生产线 PVC-O Pipe Extrusion Line

双轴取向聚氯乙烯(PVC-O)管材是通过特殊的取向加工工艺制造的管材,这一加工工艺是把采用挤出方法生产的PVC-U管材进行轴向拉伸和径向拉伸,使管材中的PVC长链分子在双轴向规整排列,获得高强度、高韧性、高抗冲、抗疲劳的新型PVC管材,性能远优于普通PVC-U管材。研究开发PVC-O管材,可以大大节约原材料资源,降低成本,提高产品性能,具有明显的经济效益和社会效益。

Biaxially oriented polyvinyl chloride (PVC-O) pipes are manufactured through a special orientation processing process, which involves axial and radial stretching of PVC-U pipes produced by extrusion. The PVC long chain molecules in the pipes are arranged in a regular manner in the biaxial direction, resulting in a new type of PVC pipe with high strength, high toughness, high impact resistance, and fatigue resistance. Its performance is far superior to ordinary PVC-U pipes. The research and development of PVC-O pipes can greatly save raw material resources, reduce costs, improve product performance, and have significant economic and social benefits.



### 主要技术参数 Principais parâmetros técnicos

口径范围 Caliber range (mm)	挤出机型号 Extruder model	主机电机功率 Main motor power (KW)	实际产量 Output (KG/H)	生产方式 Production method
φ90-250	SJP78-33	45	300	一步法 One-step process
φ110-315	SJP93-37	79	450	一步法 One-step process
φ160-400	SJP93-37	79	500	一步法 One-step process
φ315-630	SJP114-37	118	800	一步法/两步法 One/two-step process
φ450-800	SJP114-37	118	900	两步法 Two-step process
φ630-1000	SJP135-37	173	1200	两步法 Two-step process
φ800-1200	SJP135-37	173	1450	两步法 Two-step process

备注: 以上规格参数如有变更, 恕不另行通知。Note: The specifications are subject to change without prior notice.

## PVC-O管材与PVC-U、HDPE数据对比 Comparison between PVC-O, PVC-U and HDPE Pipe

执行标准 Standard		制品密度 Density(kg/m³)		物料配方成本(元/吨) Raw material cost (RMB/ton)	
PVC-O	ISO16422-2006 CLASS500级	PVC-O	1380	PVC-O	6500
PVC-U	GB-T1000.1-2006	PVC-U	1450	PVC-U	6200
HD-PE	GB-T13663-2000	HD-PE	950	HD-PE	8500

管材外径 DN mm	Item type	1.0Mpa			1.25Mpa			1.6Mpa			2.0Mpa			2.5Mpa		
		PVC-O 450级	PVC-U GB	HD-PE PE100	PVC-O 500级	PVC-U GB	HD-PE PE100	PVC-O 500级	PVC-U GB	HD-PE PE100	PVC-O 500级	PVC-U GB	HD-PE PE100	PVC-O 500级	PVC-U GB	HD-PE PE100
		SDR65	SDR26	SDR17	SDR57	SDR21	SDR13.6	SDR45.8	SDR17	SDR11	SDR37	SDR13.6	SDR9	SDR29	SDR11	SDR7.4
75	Wall thickness							1.7	4.6	6.9	2.1	5.6	8.4	2.6	6.9	10.2
	KG/M							0.54	1.48	2.14	2.14	1.77	2.55	0.82	2.14	1.97
	RMB/M							3.51	9.15	13.27	13.27	10.98	15.80	5.30	13.27	16.77
90	Wall thickness				1.6	5.4	6.7				2.0	5.3	8.2	2.5	8.2	10.0
	KG/M				0.61	2.08	1.67				0.76	2.04	2.00	2.00	3.06	2.39
	RMB/M				3.99	12.90	14.16				4.73	12.68	17.02	17.02	18.94	20.29
110	Wall thickness	1.8	4.2	6.6	2.0	5.3	8.1	2.4	6.6	10.0	3.1	8.1	12.3	3.8	10.0	15.1
	KG/M	0.84	2.02	2.04	0.94	2.53	2.46	1.12	3.11	2.98	2.98	3.76	3.59	1.75	4.56	4.28
	RMB/M	5.49	12.55	17.31	6.09	15.67	20.94	7.28	19.27	25.37	25.37	23.31	30.49	11.37	28.24	36.35
125	Wall thickness	2.0	5.3	6.4	2.2	6.0	9.2	2.8	7.4	11.4	3.5	9.2	14.3	4.3	11.4	17.1
	KG/M	1.07	2.89	2.27	1.17	3.25	3.18	1.48	3.96	3.87	3.87	4.85	4.72	2.25	5.90	5.51
	RMB/M	6.93	17.92	19.26	7.61	20.17	27.03	9.64	24.58	32.85	32.85	30.09	40.16	14.63	36.58	46.81
140	Wall thickness	2.2	5.4	8.3	2.5	6.7	10.3	3.1	8.3	12.7	3.9	10.3	15.6	4.8	12.7	19.2
	KG/M	1.31	3.31	3.26	1.49	4.07	3.99	1.84	4.98	4.83	4.83	6.09	5.79	2.81	7.36	6.92
	RMB/M	8.54	20.53	27.73	9.69	25.22	33.89	11.96	30.87	41.01	41.01	37.73	49.23	18.29	45.66	58.84
160	Wall thickness	2.5	6.2	9.6	2.8	7.7	11.8	3.5	9.5	14.6	4.4	11.8	17.8	5.5	14.6	21.9
	KG/M	1.71	4.34	4.31	1.91	5.34	5.22	2.37	6.51	6.34	6.34	7.97	7.55	3.68	9.67	9.03
	RMB/M	11.10	26.93	36.63	12.40	33.12	44.36	15.44	40.38	53.85	53.85	49.39	64.21	23.95	59.96	76.72
180	Wall thickness	2.8	6.9	10.7	3.2	8.6	13.3	4.0	10.7	16.4	5.0	13.3	20.0	6.2	16.4	24.6
	KG/M	2.15	5.44	5.41	2.45	6.71	6.62	3.05	8.25	8.01	8.01	10.10	9.55	4.67	12.22	11.41
	RMB/M	13.98	33.73	45.96	15.94	41.63	56.24	19.84	51.16	68.06	68.06	62.62	81.18	30.37	75.78	96.98
200	Wall thickness	3.2	7.7	11.9	3.5	9.6	14.7	4.4	11.9	18.2	5.5	14.7	22.3	6.9	18.2	27.4
	KG/M	2.73	6.75	6.68	2.98	8.33	8.13	3.73	10.20	9.88	9.88	12.41	11.83	5.78	15.07	14.11
	RMB/M	17.75	41.82	56.78	19.38	51.62	69.10	24.25	63.22	83.94	83.94	76.93	100.53	37.55	93.45	119.97
225	Wall thickness	3.5	8.6	13.4	4.0	10.8	16.6	5.0	13.4	20.5	6.2	16.6	25.0	7.7	20.5	30.8
	KG/M	3.36	8.48	8.46	3.83	10.54	10.32	4.77	12.92	12.51	12.51	15.76	14.92	7.25	19.10	17.85
	RMB/M	21.85	52.56	71.93	24.91	65.34	87.76	31.00	80.08	106.35	106.35	97.70	126.84	47.15	118.40	151.74
250	Wall thickness	3.9	9.6	14.8	4.4	11.9	18.4	5.5	14.8	22.7	6.9	18.4	27.8	8.6	22.7	34.2
	KG/M	4.16	10.51	10.39	4.69	12.91	12.72	5.83	15.86	15.40	15.40	19.41	18.44	9.00	23.50	22.03
	RMB/M	27.05	65.18	88.31	30.45	80.02	108.11	37.90	98.31	130.89	130.89	120.36	156.70	58.50	145.73	187.23
280	Wall thickness	4.4	10.7	16.6	4.9	13.4	20.6	6.2	16.6	25.4	7.7	20.6	31.2	9.6	25.4	38.3
	KG/M	5.26	13.13	0.04	5.84	16.27	15.95	7.36	19.92	19.30	19.30	24.34	23.17	11.25	29.46	27.63
	RMB/M	34.17	81.38	0.00	37.99	100.90	135.56	47.84	123.49	164.05	164.05	150.92	196.92	73.15	182.64	234.84
315	Wall thickness	4.9	12.1	18.7	5.5	15.0	23.2	6.9	18.7	28.6	8.7	23.2	35.0	10.8	28.6	42.6
	KG/M	6.59	16.70	16.54	7.38	20.50	20.20	9.22	25.24	24.45	24.45	30.84	29.25	14.24	37.31	34.63
	RMB/M	42.82	103.51	140.56	47.97	127.09	171.74	59.91	156.49	207.79	207.79	191.20	248.61	92.58	231.34	294.38
355	Wall thickness	5.6	13.6	21.1	6.2	16.9	26.1	7.8	21.1	32.2	9.8	26.1	39.5	12.2	32.2	48.0
	KG/M	8.48	21.15	21.03	9.38	26.03	25.62	11.74	32.09	31.02	31.02	39.10	37.19	18.13	47.35	43.98
	RMB/M	55.14	131.13	178.73	60.94	161.38	217.77	76.32	198.98	263.68	263.68	242.45	316.15	117.85	293.56	373.83
400	Wall thickness	6.3	15.3	23.7	7.0	19.1	29.4	8.8	23.7	36.3	11.0	29.4	44.5	13.7	36.3	54.1
	KG/M	10.75	26.81	26.62	11.93	33.14	32.52	14.92	40.63	39.40	39.40	49.63	47.21	22.94	60.14	55.85
	RMB/M	69.90	166.24	226.24	77.52	205.47	276.41	97.01	251.88	334.92	334.92	307.73	401.32	149.14	372.87	474.72
450	Wall thickness	7.0	17.2	26.7	7.9	21.5	33.1	9.9	26.7	40.9	12.4	33.1	50.9			
	KG/M	13.44	33.91	33.73	15.14	41.97	41.18	18.89	51.48	49.94	49.94	62.86	59.69			
	RMB/M	87.39	210.25	286.72	98.42	260.20	350.07	122.78	319.21	424.47	424.47	389.74	507.37			
500	Wall thickness	7.8	19.1	29.7	8.8	23.9	36.8	11.0	29.7	45.4	13.7	36.8	55.6			
	KG/M	16.64	41.84	41.69	18.74	51.83	50.87	23.32	63.63	61.60	61.60	77.65	73.74			
	RMB/M	108.19	259.42	354.34	121.81	321.37	432.42	151.58	394.50	523.57	523.57	481.42	626.82			
560	Wall thickness	8.8	21.4	33.2	9.8	26.7	41.2	12.3	33.0	41.2	15.4	41.2	62.3			
	KG/M	21.03	52.50	52.20	23.38	64.86	63.79	29.21	79.22	63.79	63.79	97.37	92.54			
	RMB/M	136.69	325.53	443.69	151.95	402.15	542.24	189.84	491.17	542.24	542.24	603.68	786.59			
630	Wall thickness	9.9	24.1	37.4	11.0	30.0	46.3	13.8	37.1	57.3	17.3	46.4	70.0			
	KG/M	26.62	66.52	66.15	29.52	82.00	80.66	36.87	100.20	97.94	97.94	123.35	116.99			
	RMB/M	173.00	412.41	562.25	191.88	508.37	685.59	239.63	621.25	832.48	832.48	764.79	994.44			

备注: 以上规格参数如有变更, 恕不另行通知。Note: The specifications are subject to change without prior notice.

## 医疗管生产线 Medical Tube Production Line

该系列设备由单螺杆挤出主机、挤出模具、真空成型冷却水槽、小皮带牵引、伺服切断机组组成，客户可根据需求选配输送机，设备和产品接触面铺设不锈钢面SUS304或可根据客户需求定制。

设备采用材料：医用级聚氯乙烯(PVC)；医用级聚氨酯(TPU)；等其他材料。

医疗管类型：中心静脉导管，医用PVC软管，多腔管，输液管，透析管等。

外径：1.5mm~20mm

外径尺寸公差：±0.01mm, ±0.02mm, ±0.05mm

壁厚：0.1mm~3.0mm



This series of equipment consists of single screw extruder, extrusion die, vacuum calibrated cooling tank, belt type haul-off unit and servo cutter. Equipment and product contact surface can be made of stainless steel (SUS316) or custom designed to match customer's requirements.

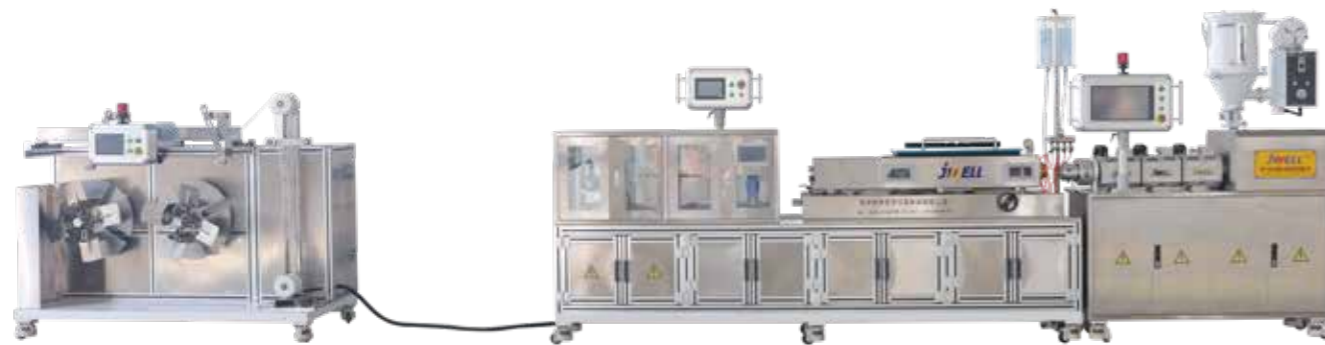
Applicable materials: PVC, TPU and other materials for medical application.

Type of medical tube: central venous catheter, medical PVC hose, multi-cavity tube, infusion tube, dialysis tube, etc.

Outside diameter: 1.5~20mm

Dimensional tolerance of outside diameter: ±0.01, ±0.02, ±0.05mm

Wall thickness: 0.1~3.0mm



### 主要技术参数 Main technical parameter

设备型号 Equipment model	螺杆直径和长径比 Screw diameter and L/D	产能kg/hr Capacity Kg/hr	占地尺寸(长宽高, 单位mm) Machine size (L/W/H,in mm)
JWS25	25*25D	2~5	L7500*W2000*H1780
JWS45	45*28D	15~25	L9500*W2500*H1780
JWS55	55*28D(30D)	30~55	L10500*W2500*H1780
JWS 65	65*28D(30D)	40~90	L12600*W3000*H1780

备注：以上规格参数如有变更，恕不另行通知。Note:The specifications are subject to change without prior notice.

## 3D打印耗材、车用小口径管材挤出生产线 3D Printing Wire/Small Diameter Pipe Extrusion Production Line for Automobile

常州金纬管道公司自主设计研发的该类生产线用于加工3D耗材，汽车用管，气管等产品。通过配套不同结构的螺杆机筒可满足PE、PP、PA、FPVC、PU、PLA、ABS、TPEE等为原材料的管材或者棒材的高速挤出。具有生产速度快，精准度高，易操作和方便维修等特点。最小化的生产废料，减小运行成本，减小占地，是客户首选的多功能设备。

This type of production line independently designed and developed by Changzhou Jwell Pipe Equipment Company is used for processing 3D consumables, automotive pipes, gas pipes, and other products. The high-speed extrusion of pipes or bars made of PE, PP, PA, FPVC, PU, PLA, ABS, TPEE, and other raw materials can be achieved by matching screws&barrels with different structures.

This type of extrusion line has the characteristics of fast production speed, high accuracy, easy operation and maintenance, which is the customer's preferred multifunctional equipment, also minimizing production waste, reducing operating costs, and reducing floor space.



### 主要技术参数 Main technical parameter

型号 Model	生产管材直径 Pipe diameter	挤出机 Extruder	最大生产速度 Max Speed	总功率 Total power
JWS-PA-12	3-12mm	JWS45/30	35m/min	40kw
JWS-PA-18	6-18mm	JWS65/30	50m/min	85kw
JWS-PLA-3A	1-3mm	JWS30/28	50m/min	25kw
JWS-PLA-3B	1-3mm	JWS45/30	120m/min	40kw

备注：以上规格参数如有变更，恕不另行通知。Note:The specifications are subject to change without prior notice.

## 小口径PE、PE-RT、PB、PP-R、PE-X等管材挤出生产线 Small Diameter PE, PE-RT, PB, PP-R, PE-X and Other Pipe Extrusion Production Lines

该生产线生产的管材有小口径HDPE供水管、燃气管、PP-R、PE-RT、PE-X、PB等，被广泛应用于住宅、商场、医院、体育场及乡村等供水、辐射地暖用的管材生产领域。

### 性能特点：

更换或增加部分单元亦可生产三层或五层阻氧管材，该类管材通过利用EVOH的阻隔特点来实现管材的阻氧性能。

该生产线为金纬公司自行研制，消化吸收了欧洲先进技术，结构独特，配置先进，自动化程度高，操作简便。挤出机螺杆采用BM高效型，产量高，塑化好，稳定可靠。

The pipes produced by the production line include small diameter HDPE water supply pipe, gas pipe, PP-R, PE-RT, PE-X, PB, etc., which are widely used in the production of pipes for water supply and radiant floor heating in residential, shopping malls, hospitals, stadiums and rural areas.

### Performance characteristics:

Replacing or adding some units can also produce three or five layers of oxygen-resistant pipes, which can achieve the oxygen-resistant performance of pipes by using the barrier characteristics of EVOH.

The production line is independently developed by JWELL Company, which has absorbed the advanced European technology. It has unique structure, advanced configuration, high degree of automation and simple operation. The extruder screw adopts BM high-efficiency type, with high output, good plasticization, stability and reliability.



### 主要技术参数 Main technical parameter

生产线型号 Type	生产管材规格 Diameter (mm)	挤出机 Extruder	最大挤出量 Max. output (kg/h)	总装机功率 Power (KW)
JWS-PPR-63 (单single)	Ø20 ~ Ø63	JWS65/33	100 ~ 120	110
JWS-PPR-63 (双double)	Ø20 ~ Ø63	JWS60/40	200 ~ 260	150
JWS-PERT-32 (低速 low speed)	Ø16 ~ Ø32	JWS65/33	100 ~ 120	110
JWS-PERT-32 (高速 high speed)	Ø16 ~ Ø32	JWS60/38	180 ~ 220	140
JWS-PE/PERT-63 (双double)	Ø20 ~ Ø63	JWS60/40	250 ~ 400	180

备注：以上规格参数如有变更，恕不另行通知。Note:The specifications are subject to change without prior notice.

## 卧式压力水冷双壁波纹管生产线

### Horizontal Pressure Water Cooling Double Wall Corrugated Production Line

**性能特点:** 金纬公司最新开发的卧式双壁波纹管生产线,是在充分吸收国内外先进技术的基础上,自主研发的新一代卧式压力水冷生产线,拥有十多项发明专利。

- ◎有多种类型挤出机可供选择,可实现HDPE、PP各种管材的生产,也可满足单壁波纹管生产需求。
- ◎定径套选用铝合金材质,表面经耐磨处理;管材波形经过专门的软件程序计算,可以在同样的米重下获得更优的环刚度。
- ◎成型机滑动底座为齿轮传动,装有大尺寸滚针轴承,提高了滑动底座的承载力;运行更平稳,寿命更长。
- ◎生产线为固定中心高,更换规格时不需再次调整。
- ◎不同规格生产线模块通用;快卸式模块设计,使模块装卸方便快捷;独特模块内冷却设计,使冷却水在模块内部快速的流动,实现管材的快速冷却定型;主传动采用伺服电机驱动,可以实现稳定精确运行。
- ◎采用先进的PLC与彩色大屏幕液晶显示屏组成的控制系统,可单机调整,全线联动,操作简单,生产稳定可靠,自动化程度高,故障自动报警。

#### 主要技术参数 Main technical parameter

型号 Type	管材直径 (mm) Pipe Diameter	生产速度 (m/min) Speed	总装机功率(Kw) Total Power	生产线长宽(m) Product Line length and width
JWBW-150	ID40-150	Max15	270	28x4.5
JWBW-300	ID100-300	Max7.5	340	30x6
JWBW-600	ID100-600	Max5.5	490	34x6
JWBW-800	ID200-800	Max4.2	615	38x8
JWBW-1000	ID300-1000	Max3.8	795	38x8.5
JWBW-1200	ID400-1200	Max2	890	38x9
JWBW-1600	ID800-1600	Max0.8	1110	42x9.5

备注: 以上规格参数如有变更,恕不另行通知。Note:The specifications are subject to change without prior notice.



#### Performance And Advantage:

Jwell's newly developed horizontal double-wall corrugated production line is a second-generation horizontal pressure water cooling production line, which is independently developed on the basis of domestic and international advanced technologies. It has more than ten invention patents.

- ◎There are a variety of types of extruders to choose, which can achieve the production of various HDPE, PP pipe, also can meet the production demand of single-wall corrugated pipe.
- ◎Sizing sleeve is made of aluminum alloy, and the surface is wear-resistant. The tube waveform can be calculated by special software program, and the ring stiffness can be obtained at the same weight.
- ◎The sliding base of forming machine is geared and equipped with large size needle roller bearing, which improves the bearing capacity of the sliding base. More stable operation, longer life.
- ◎Production line is fixed center height, and there is no need to adjust again when changing model.
- ◎Common production line modules with different specifications. Quick unloading module design makes module loading and unloading convenient and fast. The unique internal module cooling design enables the cooling water to flow rapidly. Internal module realizes the rapid cooling and shaping of pipes. The main drive is driven by a servo motor, which can realize stable and accurate operation.
- ◎Using advanced PLC and color LCD control system, which can be adjusted by single machine, linkage of all lines, simple operation, stable and reliable production, high degree of automation, automatic fault alarm.

## 立式HDPE、PP、PVC 大口径双壁波纹管及PVC 加筋管生产线 HDPE/PP/PVC Vertical Type Double Wall Corrugated Pipe and PVC Ribbed Pipe Extrusion Line

**性能和优点:** 该产品主要应用于城市排水、排污系统。经专业设计,精心制造的JWSBL立式系列HDPE/PVC双壁波纹管全电脑挤出生产线,具有产量高、挤出稳定和自动化程度高等优点。挤出机可根据用户原料情况特殊设计,HDPE采用新型高效单螺杆挤出机,PVC采用大型平双或锥双挤出机。成型机及机头精度高,模块互换性好,模块冷却方式有水冷和风冷两种,可以实现在线扩口,确保成型管材的各项性能指标,环形双刀切割机具有优异的切割精度,整条生产线采用西门子人机界面控制系统,具有很高的自控功能。

### Properties:

DWC pipe is mainly used for water drainage system. It is a fully computer controlled line. It features high and stable output capacity, and highly automatic operation. For HDPE, you can choose high efficient single screw extruder. For PVC, you can choose conical twin-screw extruder or parallel twin-screw extruder. Forming system consists mould and corrugator. Mould blocks can be easily changed and they have air or water cooling system. The bellng process is on line. High precision cutting can be guaranteed by cutting machine. The production line can also be equipped with SIEMENS PLC system.

### 主要技术参数 Main technical parameter

型号 Type	管材直径 (mm) Pipe Diameter	生产能力 kg/h PVC Output	生产能力 kg/h HDPE Output	最大速度 MAX Speed (m/min)	总功率 (KW) Total power
JWSBL-600	200-600	650-800	600-800	3.5	500
JWSBL-800	200-800	1200	1000	3.0	680
JWSBL-1000	200-1000	1300	1200	2.5	710
JWSBL-1200	600-1200	1400	1400	1.0	800

备注: 以上规格参数如有变更,恕不另行通知。Note:The specifications are subject to change without prior notice.



### 可选机型配置 Optional extruder data

生产线型号/Type	经典机型: 单螺杆挤出机系列 Traditional Serial: Single screw Extruder	节能机型: 锥形双螺杆挤出机系列 Saving-energy Serial: Conical screw Extruder
JWSBL-300/400	JWS 75/33+JWS 65/33	SJZ 65/132+SJZ 80/156
JWSBL-600/800	JWS 90/33+JWS 75/33	SJZ 80/156+SJZ 80/156
JWSBL-1000/1200	JWS 90/33+ JWS 120/33	SJZ 80/156+SJZ 92/188

备注: 以上规格参数如有变更,恕不另行通知。Note:The specifications are subject to change without prior notice.



## HDPE大口径中空壁缠绕管生产线/内肋筋缠绕管生产线 Large Diameter HDPE Hollow-wall Coiled Pipe Extrusion Line

### 性能特点:

HDPE大口径中空壁缠绕管管道是替代水泥管的产品之一，金纬机械是具备生产该设备的厂家，公司拥有强大的技术优势和丰富的管材生产经验，其设备性能稳定，操作方便，各项综合指标达到国内领先水平。

- ◎主机采用高效单螺杆挤出机，确保高速、高质量挤出；
- ◎采用复合式机头，螺旋转动成型，结构精巧，设计独特，保证产品高品质；
- ◎管材成品环刚度高,可生产矿用防静电瓦斯抽排气管材；
- ◎特种管件连接，连接方便，施工经济。

### Performance and advantage:

Large diameter HDPE hollow-wall coiled pipe is one of the best replacements for cement pipe. Jwell is one of the earliest qualified suppliers for this line. We have strong technical advantage and rich experience in pipe production providing excellent pipe machine characterised of stable performance and easy operation. The comprehensive indexes of Jwell machine reach the domestic Top level.

- ◎The main extruder adopts efficient single screw extruder ensuring high speed and perfect quality extrusion.
- ◎Composite head is used with spiral rotational molding type with ingenious structure and unique design to ensure product quality.
- ◎Pipe product has high ring stiffness, mining used anti-static mashgas drainage and exhaust pipes can be produced by this machine.
- ◎Special pipe fitting connection with convenient operation and economic construction.

### 主要技术参数 Main technical parameter

型号 Type	管径范围 Diameter(mm)	型号 Extruder	主电机功率 Main motor power(kw)	装机总功率 Power(kw)	最大产量 Max output(kg/h)
JW500	200-500	JW65X33/JW45X30	75/22	170	200
JW800	200-800	JW75X33/JW65X30	90/30	210	400
JW1200	300-1200	JW90X33/JW65X30	160/45	350	600
JW1600	800-1800	JW100X33/JW75X30	185/55	450	650
JW2400	1200-2400	JW120X33/JW75X30	220/75	550	750
JW3000	1800-3000	JW150X33/JW90X30	280/90	600	900

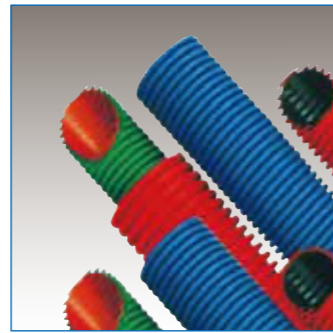
备注：以上规格参数如有变更，恕不另行通知。Note:The specifications are subject to change without prior notice.



## 特种用途的单壁、双壁波纹管机组 Special Use Single Wall and Double-wall Corrugated Pipe Extrusion Line



小型高速波纹管成型机  
Mini high speed corrugated pipe forming machine



小型双壁波纹管成型机  
Mini double wall corrugated pipe forming machine



各种单壁双壁波纹管小型模块  
Various single & double wall corrugated pipe forming machine

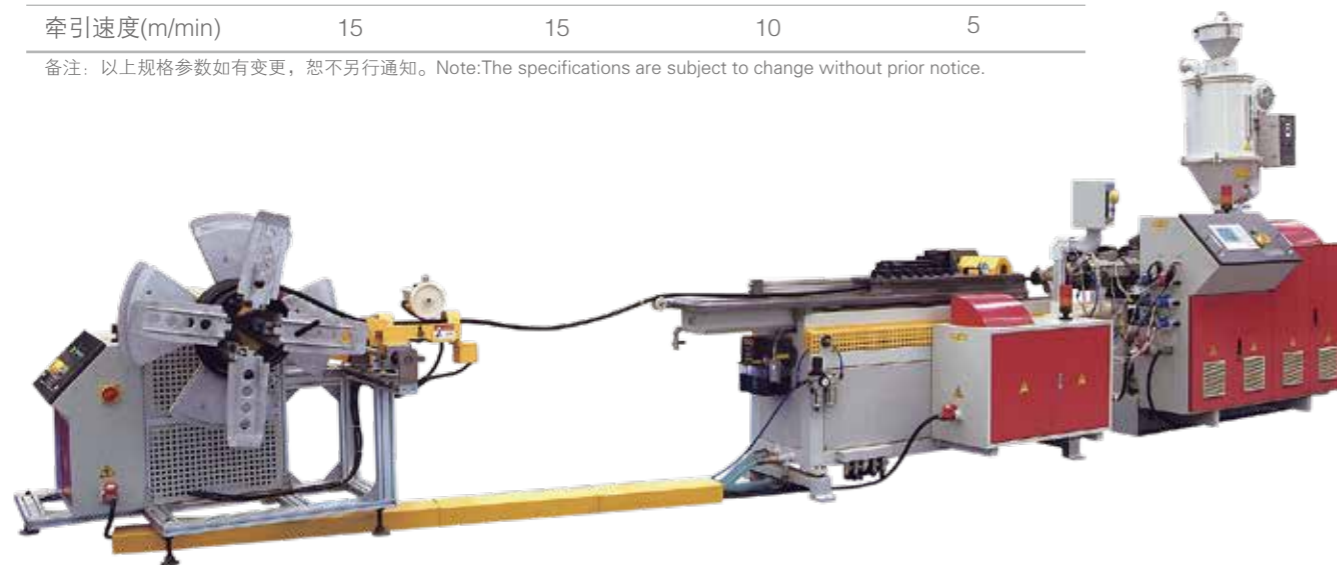
### PA/PE/PP/PVC单壁、双壁波纹管生产线 PA/PE/PP/PVC single wall, double-wall corrugated pipe extrusion line

小单壁高速波纹管成型机：可生产一模双径或一模三径的小单壁波纹管，降低模块成本，减少更换模块的时间，提高效率。  
Mini single wall high speed corrugated pipe forming machine can produce two diameters or three diameters single wall corrugated pipe with the same mould blocks, which reduce the cost of the mould blocks and the changing time, also increase the efficiency.

#### 主要技术参数 Main Technical Parameters

型号Type	JWDPG-25	JWDPG-50	JWDPG-63	JWSB150
螺杆直径(mm)	Ø45	Ø65	Ø65	Ø75
长径比(L/D)	30:1	33:1	33:1	33:1
总装机功率(kW)	50	70	70	100
管材规格(mm)ID	Ø8-Ø20	Ø12-Ø50	Ø12-Ø63	Ø90-Ø150
牵引速度(m/min)	15	15	10	5

备注：以上规格参数如有变更，恕不另行通知。Note:The specifications are subject to change without prior notice.

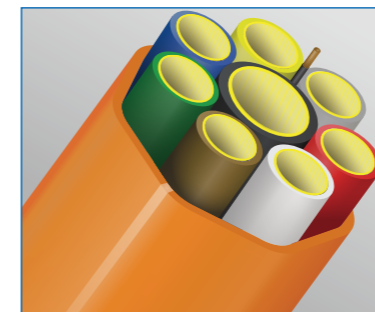


## 硅芯集束管生产线 Silicon Core Pipe Extrusion Line

**性能和优点：**硅芯管基材原材料为高密度聚乙烯，管内壁为摩擦系数最低的硅胶质固体润滑层。耐腐蚀，内壁光滑，吹气穿线缆方便，工程造价低。根据使用需求将不同数量和颜色的小管由外部护套管集中在一起。制品应用于高速公路，铁路等的光电缆通信网络系统。  
该生产线可实现多条基管同时高速放卷，快速均匀包覆挤出外层护套管。同步的牵引、切断和成品收卷均采用电脑集中控制，生产速度快，效率高。

**Performance & Advantages:** The raw material of the silicon core tube substrate is high-density polyethylene, the inner layer used a lowest friction coefficient silica gel solid lubricant. It is corrosion resistance, smooth inner wall, convenient gas blowing cable transmission, and low construction cost. According to the needs, different sizes and colors of small tubes are concentrated by external casing. The products are applied to optical cable communication network system for freeway, railway and so on.

The production line can realize multiple base pipes at the same time, high speed unwinding, and quickly and evenly cover the outer casing. Synchronous traction, cut-off and finished product coiling are controlled by computer, with high production speed and efficiency.



## 高压RTP编织复合管道生产线/钢丝缠绕管生产线 High Pressure RTP Twisted Composite Pipe Extrusion Line

### 高压 RTP 编织复合管道生产线 High pressure RTP twisted composite pipe extrusion line

**性能和优点:** 热塑性塑料增强管RTP大部分是三层结构，内层是耐腐蚀耐磨损的聚乙烯管(PE100)，中层是增强的缠绕层(缠绕的材料有高强度合成纤维，玻璃纤维，碳纤维、金属铁片和细金属丝多种)，外层是保护用的聚乙烯(PE100)层。芳纶纤维增强RTP的工作压力可高达9-14Mpa，爆破压力可高达40Mpa。



#### Performance and feature:

The thermoplastic reinforced pipe RTP has three layers: the inner layer is anti-erosion and wearing-resistant PE pipe; the middle layer is reinforced twisting layer (the material is high-intension synthesized fiber, or glass fiber, carbon fiber or fine metal thread); the outer layer is PE for protection use. The most popular reinforce material is Aramid fiber. The pressure of Aramid fiber reinforced pipe is up to 9-14Mpa. The explode pressure can be 40Mpa.

#### 主要技术参数 Main Technical Parameters

生产线型号 Type	管材规格Model(mm)	配套挤出机 Extruder	最大挤出量 Output(kg/h)	总装机功率 Power(kW)
JWG-RTP-160	Ø63~Ø160	JWSG60/38	120~300	160
JWG-RTP-250	Ø75~Ø250	JWSG75/38	300~500	210
JWG-RTP-315	Ø110~Ø315	JWSG75/38	300~500	210

备注：以上规格参数如有变更，恕不另行通知。Note:The specifications are subject to change without prior notice.



## HDPE钢丝网骨架塑料复合管主要技术参数 Main Technical Specifications Of HDPE Steel Wire Frame Plastic Pipe,also Called SRTP Pipe

### 性能和优点

钢丝网骨架塑料复合管是改良过的新型的钢骨架塑料复合管。这种管材又称为srtp管。这种新型管道是用高强度过塑钢丝网骨架和热塑性塑料聚乙烯为原材料，钢丝缠绕网作为聚乙烯塑料管的骨架增强体，以高密度聚乙烯(HDPE)为基体，采用高性能的HDPE改性粘结树脂将钢丝骨架与内、外层高密度聚乙烯紧密地连接在一起，使之具有优良的复合效果。因为有了高强度钢丝增强体被包覆在连续热塑性塑料之中，因此这种复合管克服了钢管和塑料管各自的缺点，而又保持了钢管和塑料管各自的优点。钢丝骨架增加聚乙烯三层复合管，经常被用于城市供水，土木工程，石油和天然气领域，化工，电力传输管道，冶金矿山，海水运输，造船，农业和铺设光纤电缆。

### Advantage:

Steel Wire Frame Plastic Pipe, also called SRTP pipe, is a new type of steel framed polyethylene plastic pipe. It adopts the raw material of high tensile over-plastic Steel wire mesh frame and thermoplastic PE. Steel wire mesh as reinforced frame-work and based on HDPE, it also adopts high performance HDPE modified bond resin to connect the inner space HDPE and outer space HDPE with steel wire frame closely, so that it can have an excellent compounding effect. Since the high tensile steel wire reinforcements are warped in continuous thermoplastic plastic, this composite pipe take the essence and discard the dross of steel pipe and plastic pile.Three layers steel wire reinforced composite pipe is widely frame are widely used in the area of city water supply, civil engineering, fossil oil, natural gas, chemical industry, power transmission pipelines, metallurgical mines, sea water transport, shipbuilding, agriculture and the laying of fiber optic cables.



### 规格型号

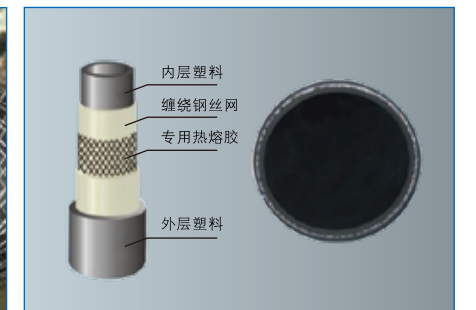
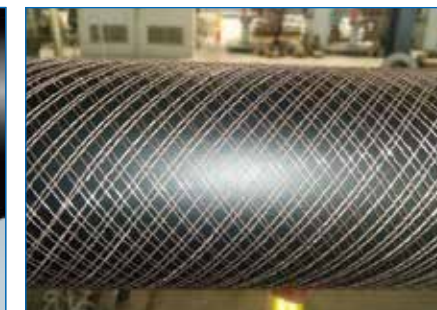
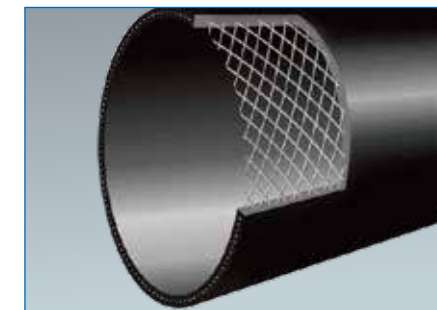
公称压力：0.6MPa--3.5MPa

规格为：DN50-DN1200

### Specifications:

Nominal pressure: 0.6MPa--3.5MPa

Dimensions: DN50-DN1200



### 部件及可选配设备 Spareparts and Optional Equipments



螺杆机筒  
Screw and barrel



管材米重在线监控系统  
Gravimetric control system



管材扩口机  
Belling machine



减速箱  
Gearbox



永磁伺服电机  
Permanent magnet servo motor



激光打字机  
Laser printer



混料机组  
Mixer



破碎机  
Crusher



撕碎机  
Shredder



测径仪  
Diameter measuring instrument



高速收卷自动包装机  
High speed winding automatic packaging machine



工业空调  
Industrial AC



热风搅拌干燥机  
Hot air stirring dryer



收卷机  
Winder



换网器  
Screen exchanger



磨粉机  
Pulverizer



PVC自动包装机  
PVC pipe automatic strapping bagging and packing machine



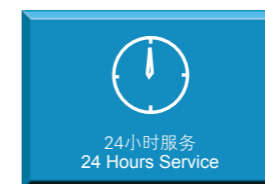
集中供料系统  
Centralized feeding system

企业风采：品质管理 技术研发 国际交流 客户服务 员工培训

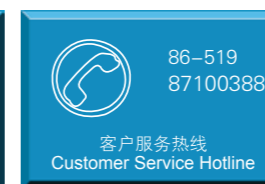
Quality Control Technology Research International Communication Customer Service Staff Training



World map showing international presence with labels for: Finland, Russia, Mongolia, Canada, U.K., Germany, Poland, Romania, Ukraine, Kazakhstan, U.S.A., France, Italy, Turkey, Uzbekistan, Mexico, Spain, Tunisia, Syria, Iran, Pakistan, Chuzhou, Suzhou, Shanghai, Korea, Japan, Morocco, Libya, Egypt, Saudi Arabia, India, Guangzhou, Zhoushan, Vietnam, Thailand, Nigeria, Cameroon, Kenya, Malaysia, Indonesia, South Africa, Australia, New Zealand, Colombia, Brazil, Chile, Argentina.



24小时服务  
24 Hours Service



86-519  
87100388

客户服务热线  
Customer Service Hotline



培训  
Training



交钥匙工程  
Turn-Key Project